

Morrinsville Gallery

167 THAMES STREET, 10AM-3PM TUES TO FRI & 11AM-3PM WEEKENDS

Fundraising Silent Auction

25th July – 9th August 2024

Community Gallery

**Thank you so much for supporting the financial wellbeing of the
Morrinsville Art Gallery Charitable Trust!**

Please register at the front desk if you wish to make a bid. The register will hold your name and phone number, but you place your bid with your registration number to retain anonymity on the bidding sheets. This information will be kept confidential and not used for any other purpose.

Ticket holders for the Madeleines Concert – your ticket number is your registration number, please confirm your name, phone number and registration number at the front desk.

1. **Artist Unknown**
Girl Knitting
900 x 700mm



2. **Heather Leonard**
Harbour City
900 x 600mm



3. **Vicki Carruthers**
Clearing Rain
830 x 1000mm



4. **Catherine Smith**
Inferno
910 x 610mm



5. **Pauline Tapping**
Lindis Pass
420 x 300mm



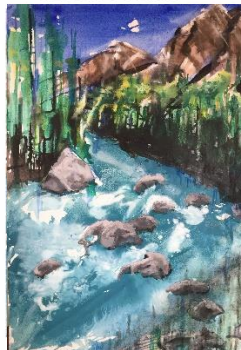
6. **Pauline Tapping**
Blue Hill
360 x 300mm



7. **Marion Bailey**
Rotowaro
620 x 770mm



8. **Vicki Carruthers**
Southern Stream
1290 x 900mm



9. **Vicki Carruthers**
Portrait of a Cliff Face
990 x 1230 mm



10. **Vicki Carruthers**
All at Sea
730 x 1000 mm



11. **Joy Yeates Ross**
Flower Power
700 x 560mm



12. **Creative Fibres**
Merino Possum
1300 x 1300mm



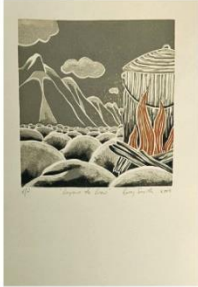
13. **Barry Smith**
Solar Fog
180 x 125mm



Morrinsville Gallery

167 THAMES STREET, 10AM-3PM TUES TO FRI & 11AM-3PM WEEKENDS

14. **Barry Smith**
Beyond the Brew
420 x 300mm



15. **Barry Smith**
Beyond Klondyke – Waimak II
420 x 300mm



17. **Barry Smith**
Upper Waimak
350 x 490mm



18. **Brian Gibson**
Waikoko Stream
Central Nth Island
590 x 830mm



19. **Picasso** Ceramic Prints
Vintage Calendar
12 x colour prints
520 x 420mm



20. **Aubudon** Bird images
Vintage Calendar
12 x colour prints
520 x 420mm



21. **Vicki Carruthers**
Seascape
Marble Sculpture
560 x 360 x 200mm



22. **Karin Barr**
Duo Observer
Glass & Stone
230 x 150 x 80mm



23. **Adrian Worsley**
Ears
Recycled Materials
700 x 770 x 290



24. **Georgia Black**
Pet Portrait
Commission - A3



25. **Mr Black**
Photo Portrait sitting
Up to value \$400



26. **Peata Larkin**
Explorer (2012)
Painting on mesh on canvas
962 x 660 mm



27. **Rei Hamon**
Embrace
Print
660 x 850mm



28. **Wayne Sinclair**
Waikato Autumn
630 x 630mm



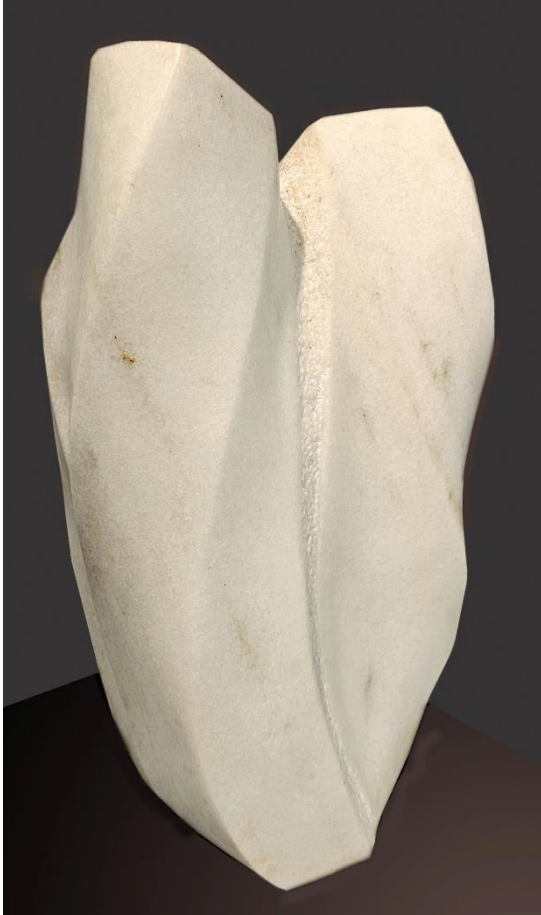
Thank you so much for supporting the financial wellbeing of the Morrinsville Art Gallery Charitable Trust!
Please, contact us at info@morrinsvillegallery.org.nz if you cannot visit the gallery and would like to register and obtain a bidding number, or visit our website www.morrinsvillegallery.org.nz.

Morrinsville Gallery

167 THAMES STREET, 10AM-3PM TUES TO FRI & 11AM-3PM WEEKENDS

HERO ITEMS

Below are Artist Biographies for the four Pieces selected to be Auctioned on the Event Night in a live Auction. The works will start with the top bid they attained in the Silent Auction.



AUCTION LOT NUMBER: 21

Starting Bid: \$850

Seascape

Vicki Carruthers

Takaka marble

Vicki has been painting for over 30 years and sculpting hinuera, marble and oamaru stone for 20 years. As a member of Artnexus she exhibited annually from 2001 to 2020, including at the Morrinsville Gallery, ArtsPost Gallery (Hamilton), Sandz Gallery (Hamilton) and Estuary Arts Centre (Orewa).

In addition to exhibiting with the Artnexus group she has had four solo exhibitions, the most recent at Morrinsville Gallery in 2023, and has contributed to nine other exhibitions. She was a member of the organising committee for the Inform Sculpture Symposium at the Hamilton Gardens Summer Festival from 2006-2008.

AUCTION LOT NUMBER: 22

Starting Bid: \$140

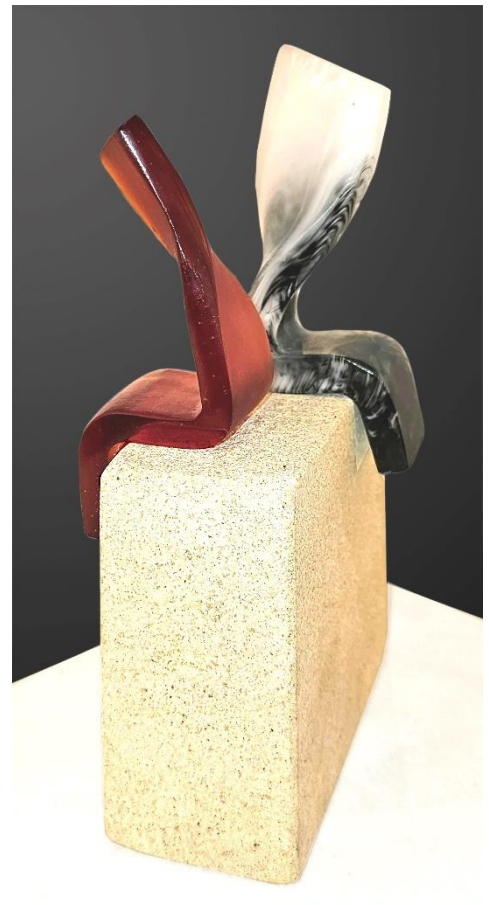
Duo Observer

Karin Barr

White and red figure on Oamaru stone

Karin is a local glass artist with a background in stone carving. Her small installation pieces show a playful concept with mixing and matching different media. Karin's works underline her interest in working with simple forms showing clear and strong lines. With minimal manipulations Karin creates abstract figures showing true human qualities.

German born Barr has regularly participated in both solo and group shows in New Zealand, Australia and Germany for over 20 years. Her purposely built studio is located on a farm in Tauhei.



Morrinsville Gallery

167 THAMES STREET, 10AM-3PM TUES TO FRI & 11AM-3PM WEEKENDS

AUCTION LOT NUMBER: 26

Starting Bid: \$850

Explorer (2012)

Peata Larkin

Paint on Mesh and canvas

Peata Larkin - Ngāti Whakaue, Ngāti Tūwharetoa, (b. Rotorua, Aotearoa New Zealand) graduated with a Master of Fine Art from RMIT, Melbourne in 2009, after receiving a Bachelor of Fine Arts degree from the Elam School of Fine Arts, University of Auckland (2004).

Peata pioneered a way of making which is unique. Acrylic paint is pushed through a weave substrate and in doing so the works acquire sculptural characteristics. Paint emerges from the mesh in mounds of colour (shaped by volume) and present in an abstract pattern, often based on Māori weaving and Tūkūtu. This piece 'Explorer' came from a pivotal transitional period, when her works began to employ a more precise digital language immediately prior to the emergence of her lightboxes.



Peata Larkin's work operates in a space between binary constructions – Māori/Pākehā, past/present, art/science, matter/spirit – weaving cultures and spheres of knowledge together into new hybrid forms. In 2018, Larkin was the recipient of the Kaipara Wallace Arts Trust Award Residency at Altes Spital in Solothurn, Switzerland and was awarded the Molly Morpeth Canaday Award in 2006.

In 2013, Larkin completed the large-scale commission, Piki Ake – Rise Up, for the ANZ Tower in Auckland's central business district. Following the success of this project Larkin has received consistent public and private commissions including Westgate, Newmarket (2018), In the Wynyard Quarter Park Hyatt reception lounge, an incredibly scaled lightbox installation (2019) and a city block length 5 story wall commission for the International Conference Centre, Auckland, plus most recently she has been awarded a commission in Tauranga, the first artwork in the Font Tauranga public art collection to be positioned in The Red Square in the city CBD.

Morrinsville Gallery

167 THAMES STREET, 10AM-3PM TUES TO FRI & 11AM-3PM WEEKENDS

AUCTION LOT NUMBER: 23

Starting bid: \$300

Ears

Adrian Worsley

Recycled Metal Sculpture

Sculptor Adrian Worsley's work is held in many collections, notably In the Arts Trust Collection. Adrian works in his well organized workshop in Te Aroha and now works in larger than life pieces of public art. He has a long association with the Morrinsville Gallery having designed and fabricated much of the interior fittings.

Adrian designs and constructs original sculptures entirely from recycled materials, he breathes new life into the inanimate objects around him, transforming them into magnificent

tactile works of art that feature clever blending of materials and immaculate finishes. Adrian is perfectly placed to combine his experience and the practical skills gained along the way in his previous trade as fitter/welder with his creativity and vision as an artist.

Combinations of copper, stainless, wood and steel can all be brought together in an individual piece, allowing contrast, creating warmth and movement, and infusing the sculpture with a life of its own.

Recently Adrian has turned his focus to creating larger, more complex commissioned pieces for companies and individuals. Each piece bears testament to his skilful welding, amazing attention to detail, specialist preparation and the high-quality finishing techniques that place him in a class of his own.

About us

The Morrinsville Art Gallery Charitable Trust is the leading art gallery in the Matamata-Piako District. We work to create a vibrant environment for all locals and visitors to Morrinsville and the Mighty Waikato Region. As a charitable trust run by one staff member and 35 volunteers, we create many opportunities for our community to connect within an art context.

We are committed to supporting local and national artists. With a diverse programme of exhibitions and events, we aim to inspire and engage our community with the transformative power of art.

Morrinsville is a vibrant and creative hub for art and culture in Waikato, and we are immensely proud to be part of it.

Please, contact us to discuss your upcoming exhibition or collaborative project at info@morrinsvillegallery.org.nz or visit our website www.morrinsvillegallery.org.nz.

